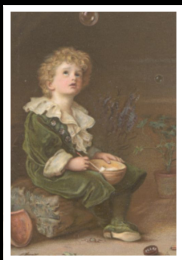




AUTUMN TERM 2011

Our local Art Galleries and Museums are rich in their collections of Victorian art. In particular the Lady Lever Art Gallery in Port Sunlight has an impressive collection of Pre-Raphaelite paintings and is well worth a visit.



Bubbles
By Sir John
Everett Millais

Dear Parent/Guardian,
This term we will spend some time in our History, Literacy and Geography lessons studying **Victorian Britain**. Our main focus will be to discover more about the lives of *Victorian children*. In order to add extra interest and enjoyment to the topic, we will be visiting *Quarry Bank Mill* on **Monday 3rd October**.



The children will be asked to wear Victorian clothes which will also see some use on the following day, when we will re-enact a Victorian day at school!

OTHER SUBJECTS

In their **Art and Design** work this term, the children will undertake two projects based on designs developed from plant drawings. For this textile design, children will explore tie and dye and embroidery techniques.



In **Music** we will be singing some traditional Victorian songs and composing work which will reflect upon the lives of children of the period.

HOMework

In their *Homework Diaries* the children will be recording specific details about each homework task. The general weekly pattern for our homework will be as follows:

Monday: English (Vocabulary Work) or Science, to be completed for Wednesday, and **Spellings** to be learned for testing later in the week.

Wednesday: English, either a writing task or related grammar or punctuation work, to be completed by Friday.

Friday: Mathematics, to be completed for Monday.

You will note that in the children's Homework Diaries, we also expect a substantial amount of regular reading to take place. Practice of mental arithmetic skills and strategies is also an essential part of weekly homework.



P.E. LESSONS

P.E. lessons throughout the year will take place on **Wednesday** afternoon for **6RL**, and on **Thursday** afternoons for **6K** and **6L**. Could you please ensure that your child has the correct, clearly named, school P.E. kit available for those times.

PARENT-TEACHER MEETINGS

Parent-teacher meetings will take place in the week commencing **Monday 17th October**. Evening appointments will be available on **Monday** and **Wednesday** of that week. We hope that these early meetings will give us an opportunity to discuss initial impressions and possibly suggest some targets for future development during the remainder of the school year.

11+ TESTS

As you will no doubt be aware, the children are already involved in weekly preparation for these tests. Any help you can offer at home will clearly be beneficial. The first actual test will be on **Tuesday 29th November** and the second test on **Tuesday 6th December**.

SCHOOL CAMP 2012

You may find it valuable to have advance notice of the dates for the Year 6 summer camp. The camp will take place during the week beginning **Monday 18th June**.

INDIVIDUAL PHOTOGRAPHS

Individual photographs of the children will be taken on **Monday 26th September**.

**SATS TESTS 2012**

This year's SATS tests will take place week commencing **Monday 14th May 2012**.

ROAD SAFETY TALKS

We hope that each Year 6 class will receive a presentation on the subject of road safety and awareness during the term—dates to be confirmed.

NON-UNIFORM DAY

There will be a Non-Uniform Day on **Thursday 8th December**.

CHRISTMAS FAIR

The Home and School Association Christmas Fair will take place on **Saturday 10th December**.

CHRISTMAS DISCO

A disco for children will take place on **Wednesday 14th December**.

CHRISTMAS LUNCH

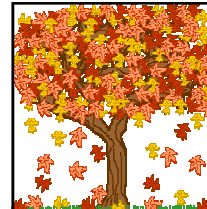
Children will have the opportunity to purchase a Christmas lunch in school on **Wednesday 14th December**.

CHRISTMAS PARTIES

Class Christmas parties will take place on **Thursday 15th December**.

THEATRE COMPANY VISIT

A visiting theatre company will entertain the children on the morning of **Friday 16th December**.

**AUTUMN TERM HOLIDAY DATES**

We break up for the half term holiday at 3.30 pm on **Friday 21st October** and return to school on **Monday 31st October**.

SCHOOL DEVELOPMENT DAYS

School will be closed to pupils on **Friday 9th December** and **Tuesday 3rd January** for School Development Days. Two further days are yet to be arranged.

School closes for the Christmas holidays at 3.30pm on **Friday 16th December** and children return to school on **Wednesday 4th January**.

Mrs P. Lammin
Mrs A. Kirkby
Miss R. Lear